

**FOR IMMEDIATE RELEASE: Meg Foley Comes to KST with *Blood Baby*, a Week of Events Centering Radical Gender Expression, Queer Kinship, and Belonging**

**MEDIA CONTACT**

Liz Rudnick, Marketing Manager  
lizrudnick@kelly-strayhorn.org

August 29, 2023



**EAST LIBERTY, PA**— The KST Presents Fall 2023 season, **Brave Actions Bold Voices**, kicks off with *Blood Baby*, a body of work by interdisciplinary artist **Meg Foley**. The week-long program begins on September 18 with a **Welcome Dinner & Artist Talk** celebrating the opening of *Eternal Maternal*, a visual art exhibition curated by **DS Kinsel** featuring Foley and **Fran Flaherty**. Then, on September 20, Foley and KST mutual-aid resident **PearlArts** co-present *The Embodied Imaginary*, an improvisational dance workshop. Later that evening, Foley leads a **Queer Parent Convening**, a free dinner where queer and trans parents can connect and share their experiences. The week comes to a crescendo on Friday and Saturday, September 22-23 when Foley presents *Blood Baby: Communion*, an evening-length performance piece celebrating queer kinship, radical gender performance, and belonging.

“For the past 20 years I have made performance projects with radical self-determination as subject, **crafting body-based explorations of identity, belonging, and time from a queer perspective**. In a loving tumble with formalism in dance and what constitutes performance and influenced by my identity as a queer mom in a trans family, I work on a continuum of research that centers the 24hr body and asks how identity is occupied: an all-the-time, ever-shifting self, a sacred site, a portal, a prism.” — Meg Foley

*Eternal Maternal*, a visual art exhibition in KST’s historic lobby, puts Foley’s creative practice in conversation with the work of Fran Flaherty, an artist, curator, and educator who centers issues of migrant family relationships, maternal feminism, and disability aesthetics (Flaherty happens to be

Deaf). Flaherty is the founder of ***Anthropology of Motherhood***, a project inspired by the care paradigm — the premise that human beings cannot survive alone, and that the progress of human beings as a species flows from our ability to connect to each other. In works from the Alchemy series, Flaherty scanned unusable breast milk with a flatbed scanner. The resulting silk-mounted images and 3D printed objects evoke bodily topography, subterranean organs, and pressed flowers. Foley’s contribution to the exhibition is the collaborative ***Blood Baby: Primordial***, an otherworldly, sensual video and sound installation by visual artist (and Foley’s co-parent) **Carmichael Jones**. *Primordial*’s “rock drag” captures Foley dancing with the landscape, connecting geology, transformation, and queer gestation. The opening will take place with a reception and artist talk with ASL interpretation at Kelly Strayhorn Theater on Monday, September 18 at 6:00pm.

On Wednesday, September 20 at 9:00am, Foley asks participants of ***The Embodied Imaginary***, an improvisational dance-making workshop: What does it feel like to be a rock? The hour-long exploration invites members to reframe their relationships to movement, inhabit the moment where feeling meets form, and use textiles as body-building tools. The workshop is co-presented with KST mutual-aid resident PearlArts and will take place at KST’s Alloy Studios in Friendship. That same evening, Foley hosts a gathering for queer and trans parents to share their experiences of family-building in an intimate home setting, complete with dinner and childcare.

Finally, KST presents Megan Foley’s ***Blood Baby: Communion*** on Friday and Saturday, September 22 - 23. The piece is participatory and audiences will experience the work in the round and in close dialogue with Foley. Exploring the relationship between body and language, the event involves shared reading, facilitated embodiment, and conversation between Foley and the audience. Overlapping geology, gestation, and parenting, *Communion* explores the shape and feeling of language on and against our bodies, demonstrating how language extends, represents, and ruptures our corporeal identities. Friday night will also feature a post-performance discussion with ASL interpretation.

For full details on Kelly Strayhorn Theater’s upcoming Fall 2023 programming, click [HERE](#).

---

LOCAL & GLOBAL PERFORMANCE | COMMUNITY

## Welcome Dinner & Artist Talk

**Fran Flaherty & Meg Foley**

**Monday, September 18\***

**6:00pm**

\*with ASL Interpretation

Kelly Strayhorn Theater | 5941 Penn Ave.

Pay What Moves You: \$0 - \$25

[Click here to learn more...](#)



BOOM GALLERY | VISUAL ART

**Eternal Maternal**  
Fran Flaherty & Meg Foley

Monday, September 18 - Sunday, December 17  
Opening Reception: Monday, September 18, 6:00pm

Kelly Strayhorn Theater | 5941 Penn Ave.  
Pay What Moves You: \$0 - \$25

[Click here to learn more...](#)



---

LOCAL & GLOBAL PERFORMANCE | WORKSHOP

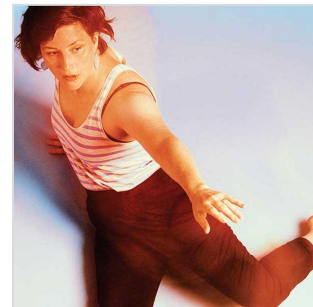
**The Embodied Imaginary**  
with Meg Foley

Co-Presented with PearlArts

Wednesday, September 20  
9:00am - 10:15am

KST's Alloy Studios | 5530 Penn Ave.  
Pay What Moves You: \$10 - \$25

[Click here to learn more...](#)



---

LOCAL & GLOBAL PERFORMANCE | COMMUNITY

**Queer Parent Convening**  
with Meg Foley

Wednesday, September 20  
7:00pm

RSVP for Location  
Pay What Moves You: \$0 - 25

[Click here to learn more...](#)



---

LOCAL & GLOBAL PERFORMANCE | DANCE

**Meg Foley**  
**Blood Baby: Communion**

Friday & Saturday, September 22\* - 23  
7:30pm  
\*Post Performance Discussion with ASL Interpretation

Kelly Strayhorn Theater | 5941 Penn Ave.  
Pay What Moves You: \$15 - \$35

[Click here to learn more...](#)

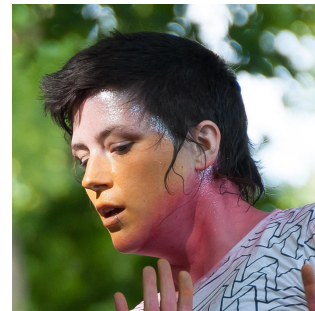


## ABOUT THE ARTISTS

**Fran Flaherty** is a Deaf artist, curator, and educator practicing in Pittsburgh, PA, and Rochester, NY. A first-generation immigrant from the Philippines, her work is centered in issues surrounding migrant family relations and assimilation, maternal feminism, & disability aesthetics. Flaherty is the founder of Anthropology of Motherhood, which engages the complex visual, material, emotional, corporeal and lived experiences of motherhood, care-giving, parenting, nurturing and maternal labor. She is also the Director of Dyer Arts Center for the Advancement of Deaf Culture at RIT/NTID, serves on the Advisory Board of the Office of Public Art in Pittsburgh, and is a proud member of the #notwhite collective.



**Meg Foley** is a queer dance artist, educator, and parent who creates performances and somatic-based events as self-affirming practices. She currently researches gay and trans families and how we are formed. Her improvisational practice builds detailed movement vocabularies out of scientifically-engaged research and lived experience. Artistic collaborations include co-curating Tender Hotel, a 24-hour virtual hotel hosting rooms facilitated by 100+ international artists within Art Station Foundation's and CounterPulse's Grand reUnion, and a National Center for Choreography Akron Dancing Lab exploring how artistic and parenting practices overlap with fellow artist parents. She grew up in the DC area, was a creative movement baby who grew up to do a lot of club dancing, studied visual art and dance, and now is a queerdo mama, based in Philadelphia.



---

## ABOUT KELLY STRAYHORN THEATER

Named after 20th century entertainment legends **Gene Kelly** and **Billy Strayhorn**, both natives of Pittsburgh, Pennsylvania, **Kelly Strayhorn Theater** (KST) is reflective of the passion that its namesakes had for the arts. Today, KST carries their legacy by fostering bold and innovative artistry with a global perspective. **KST celebrates diversity in voice, thought, and expression**, and upholds a firm commitment to inclusion.

KST has a dynamic footprint in Pittsburgh, with two venues running along Penn Avenue. **KST's Alloy Studios** is a cultural hub in the heart of Friendship, and the historic **Kelly Strayhorn Theater** is located in the thriving business district of East Liberty. More than 20 years after the founding of the theater, KST continues to use its broad reach to impact the contemporary arts and the community.